

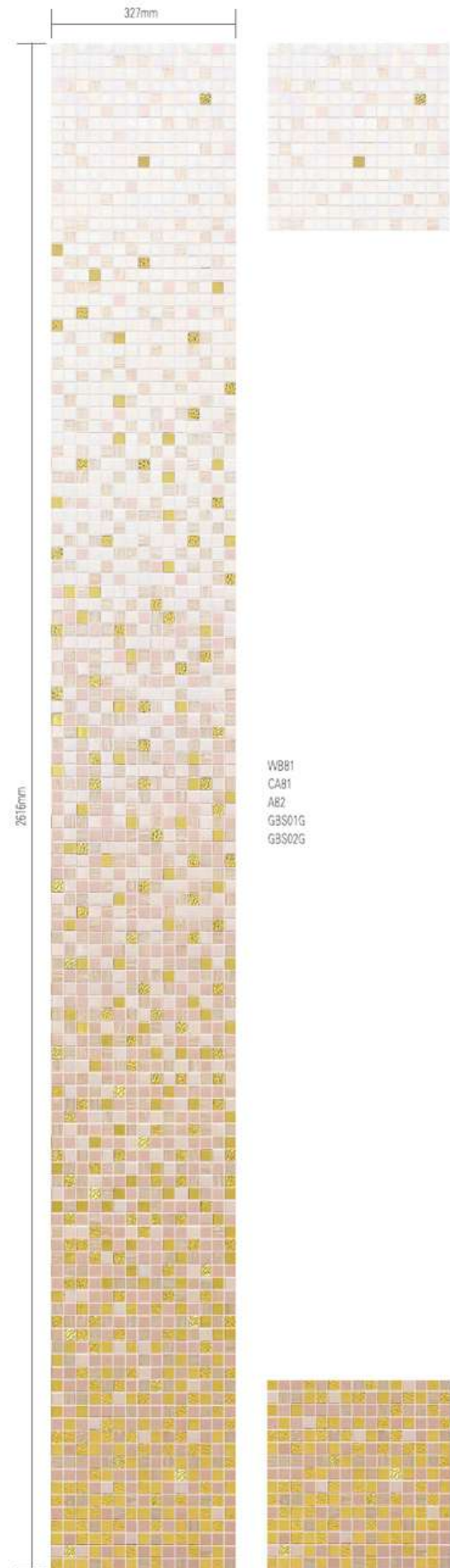




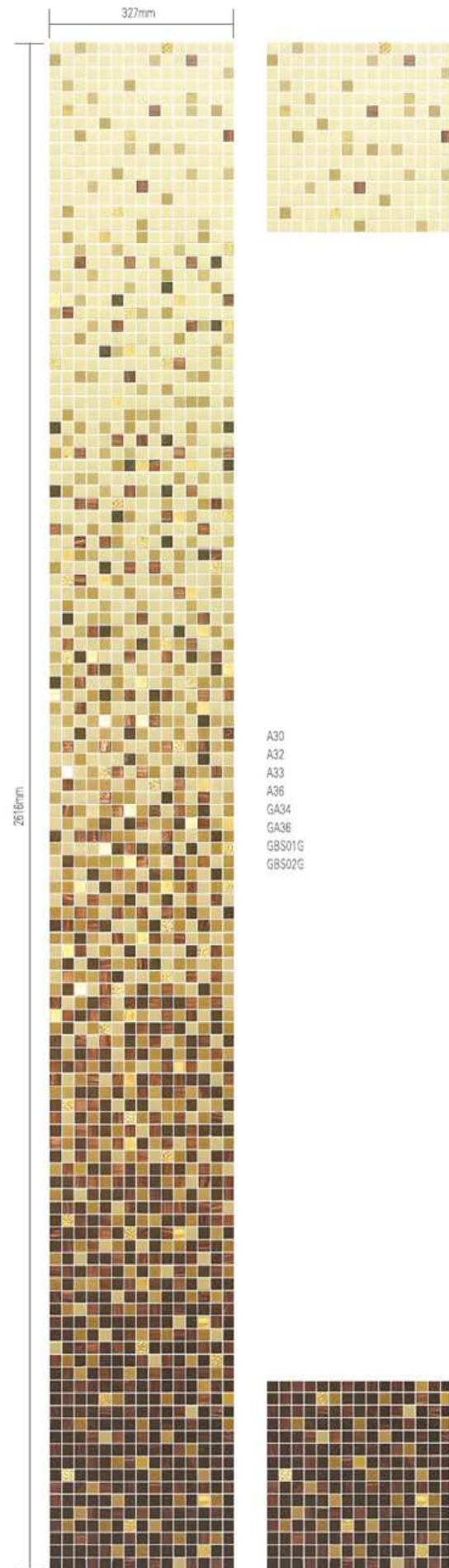
**Sylvia** art mosaic

**4ever**<sup>®</sup>  
Tiles  
Flooring solutions forever

**GRADUAL CHANGING PART**  
MOSAIC SIZE 20x20MM



P2057



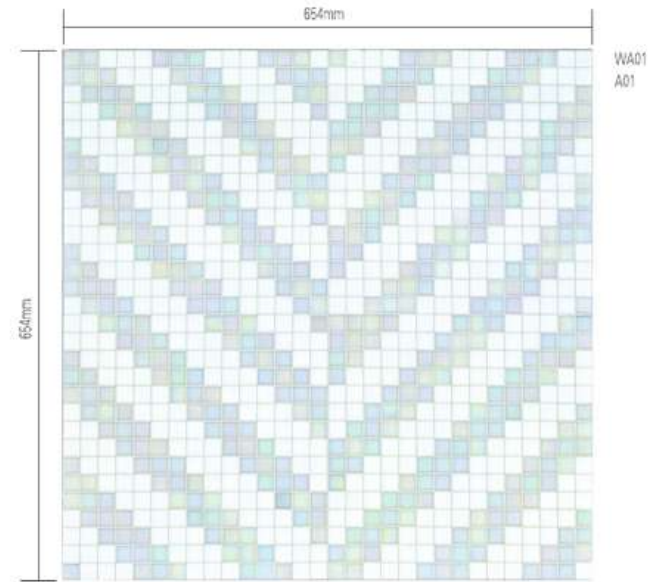
P2043



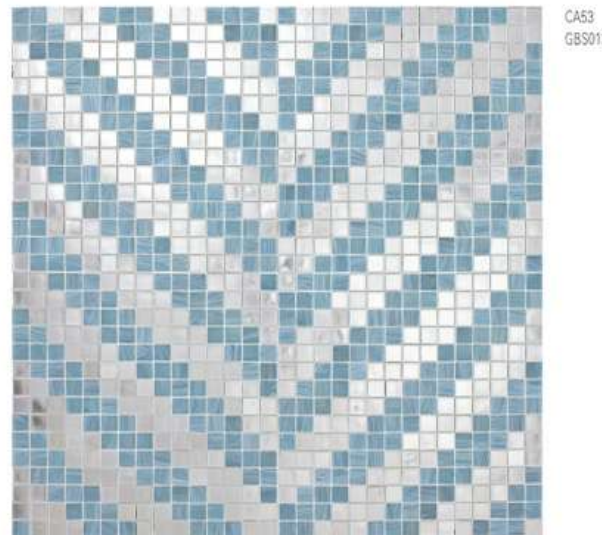
P2057

# GRAIN PART

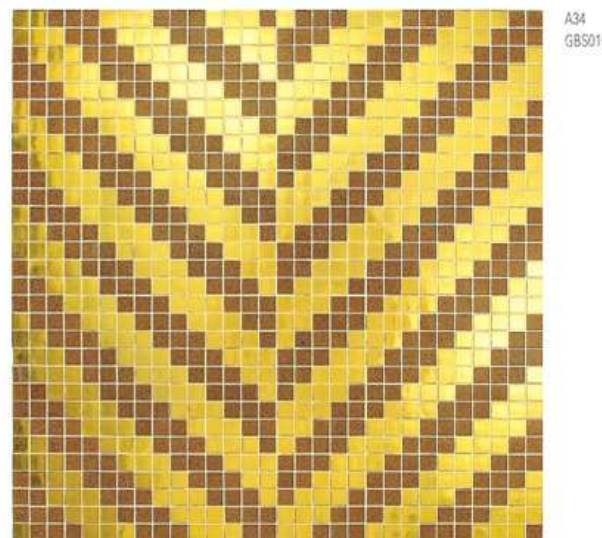
MOSAIC SIZE 20x20MM



F420130B



F420130C



F420130A



F420130A

# PUZZLE PART

MOSAIC SIZE 20x20MM



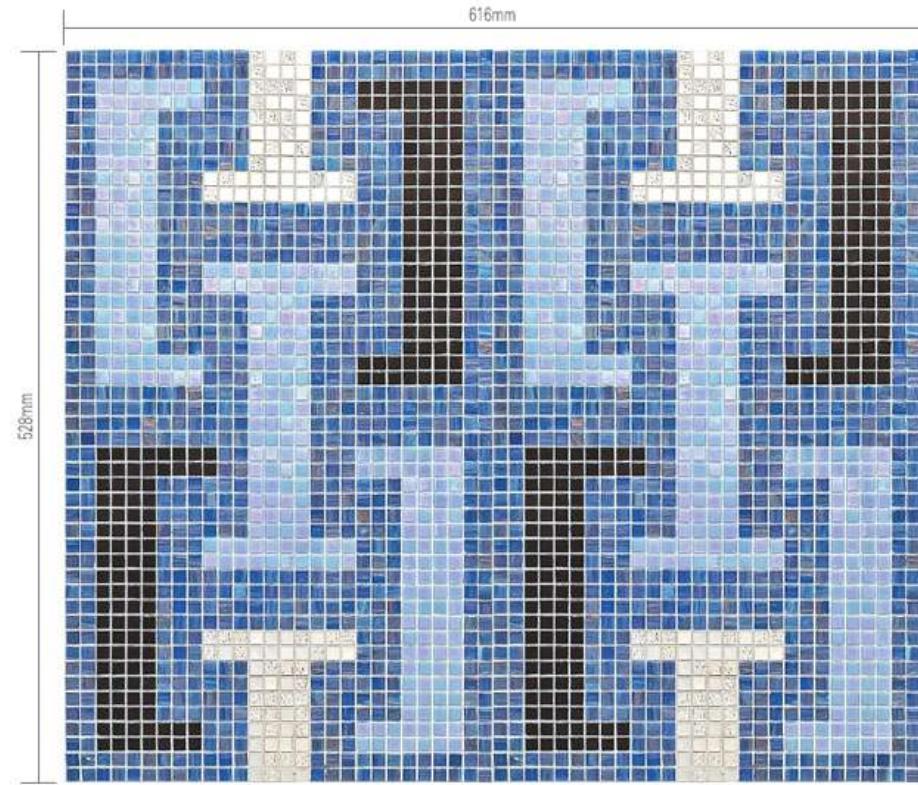
R20104C



R20104C

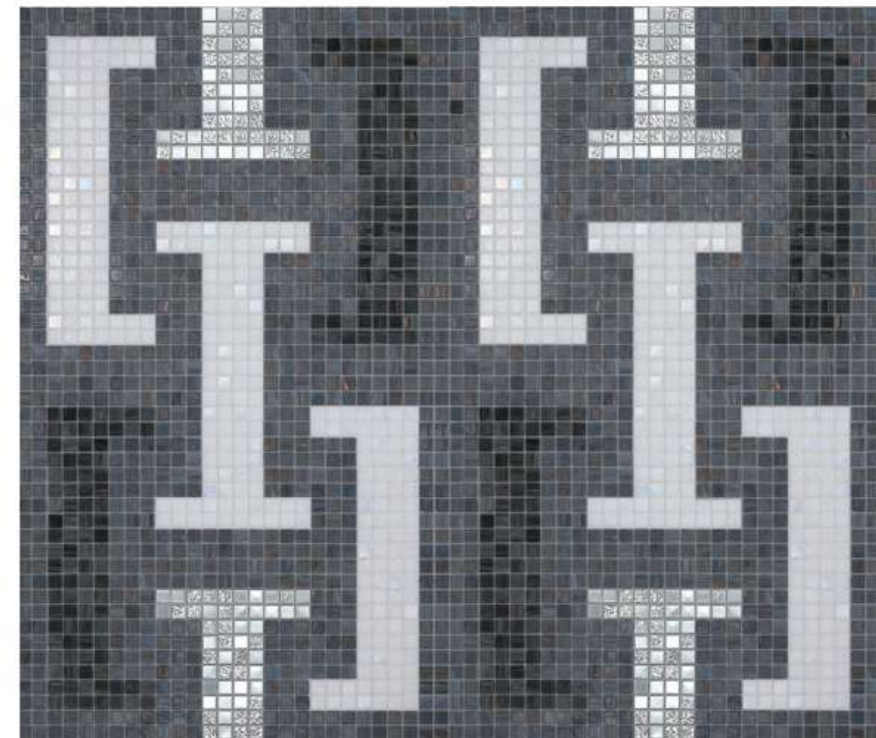
# PUZZLE PART

MOSAIC SIZE 10x10MM



A49  
GA47  
WA15  
GBS01S  
GBS02S

R10513B



GA58  
GA59  
WA02  
A02  
GBS01S  
GBS02S

R10513A



R10513A

# PUZZLE PART

MOSAIC SIZE 10x10MM

1320mm



- GA65
- GA62
- GA57
- A49
- GA72
- GA59
- G10
- G12
- A63
- GA28
- A14
- G19
- GA67
- GA49

2020mm

R10529



R10529

PUZZLE PART

MOSAIC SIZE 10x10MM

1738mm

2112mm



- A01
- A02
- A03
- A05
- A06
- A07
- A09
- A73
- A49
- GA49

R10539



R10539



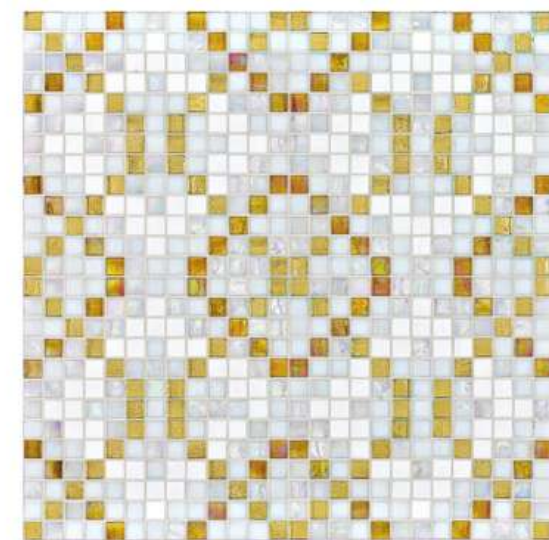
**GRAIN PART**

MOSAIC SIZE 15x15MM



AJ49  
 MJ47  
 MJ130  
 MJ01

**R15311A**



AJ102  
 WJ02  
 MJ130  
 AJ01  
 MJ35

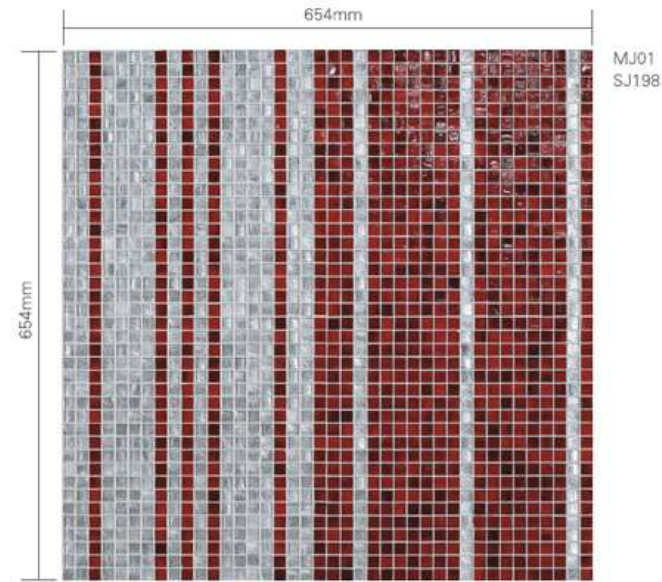
**R15311B**



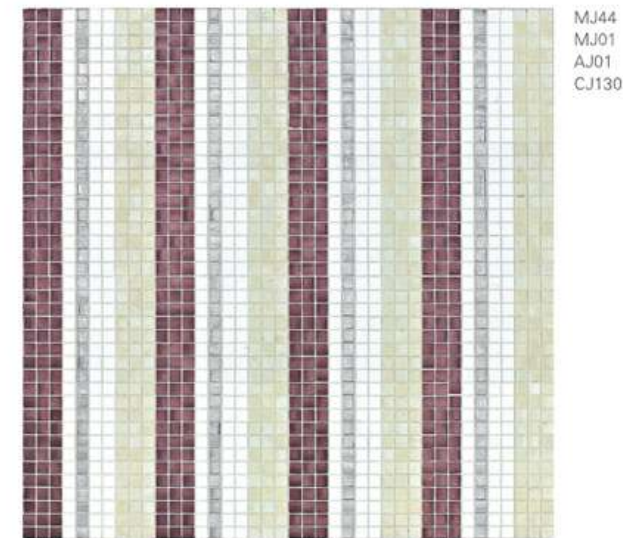
**R15311A**

**GRAIN PART**

MOSAIC SIZE 15x15MM



**F115120**



**F115121**



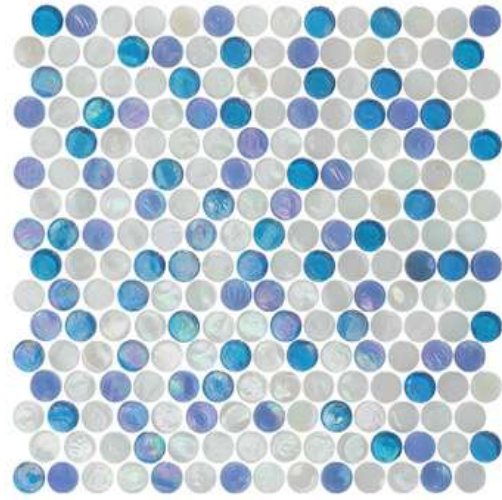
**F115122**



**F115120**

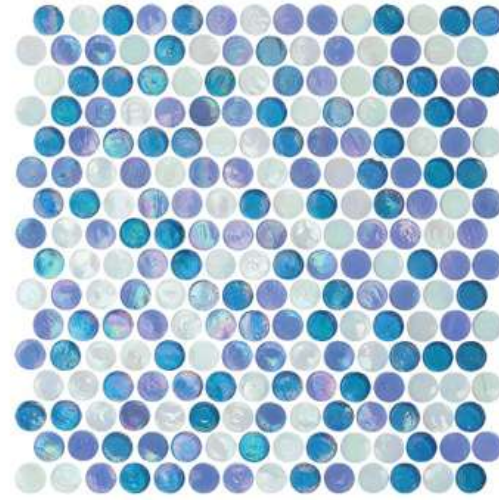
**COLOUR CUBE MIXED  
CIRCLE(KSC)**

MOSAIC SIZE  $\phi$ 19MM



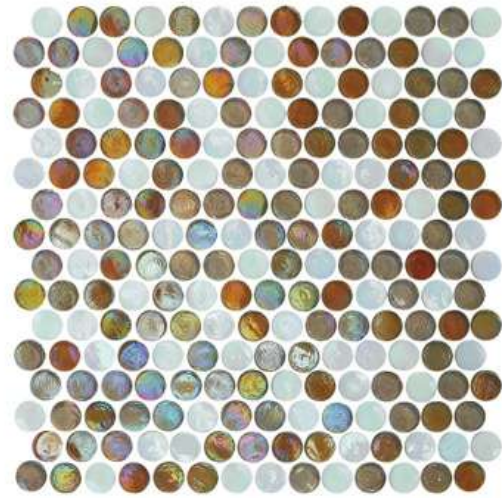
SC15  
SC18  
SC02

**KSC9310**



SC01  
SC18  
SC15

**KSC9306**



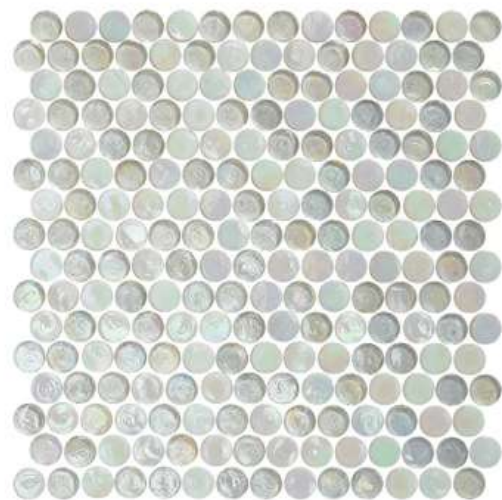
SC07  
SC01  
SC35

**KSC9320**



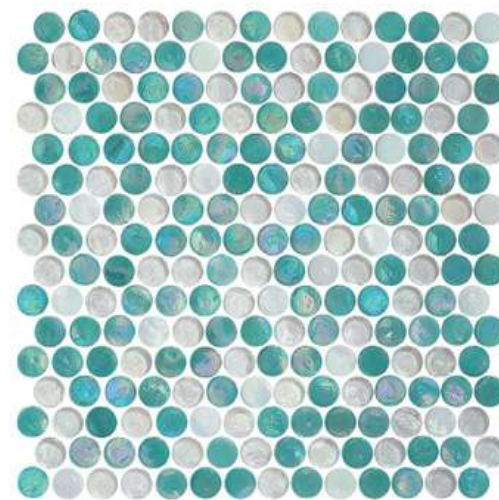
SC01  
SC37  
SC48

**KSC9314**



SC03  
SC01

**KSC9317**



SC01  
SC26  
SC03

**KSC9321**



**KSC9306**

# COLOUR CUBE MIXED CIRCLE(KSC)

MOSAIC SIZE  $\phi$  19MM



SC02  
SC33  
SC35

KSC9304



SC07  
SC35  
SC37

KSC9311



SC37  
SC33  
SC35

KSC9316



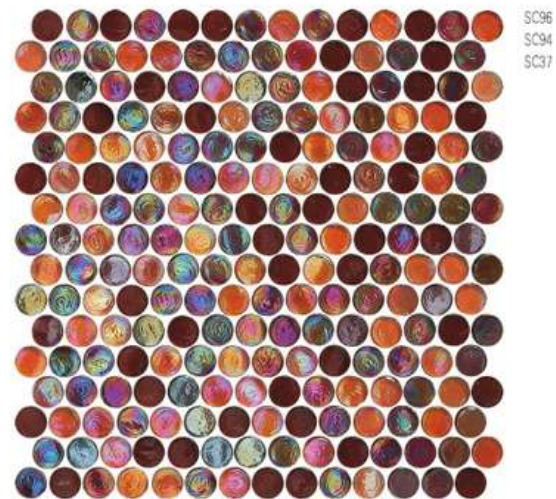
SC36  
SC35  
SC34

KSC9305



SC33  
SC48

KSC9219



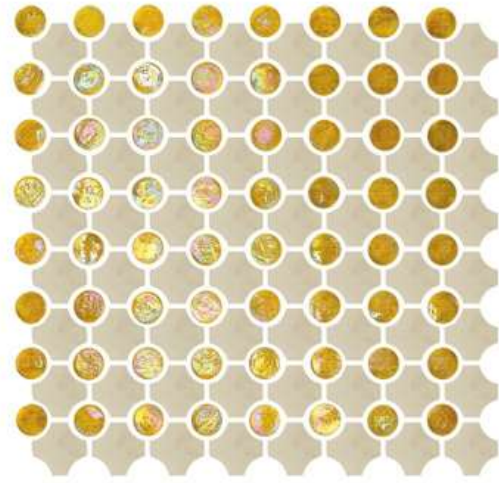
SC36  
SC34  
SC37

KSC9303

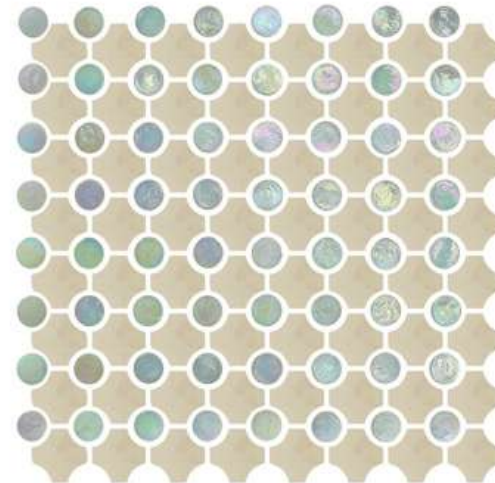


KSC9303

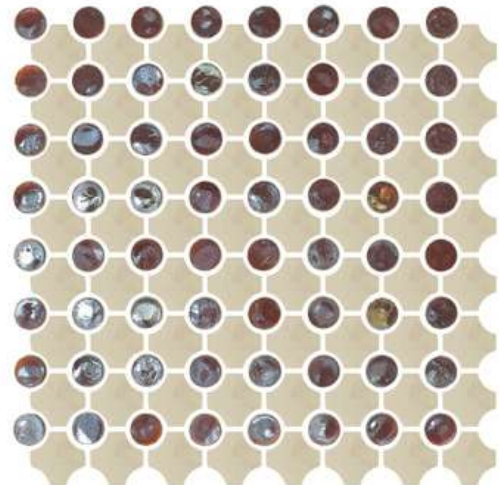
CLASS COMBINATION  
BTOCAD(SCE)



SCE9330



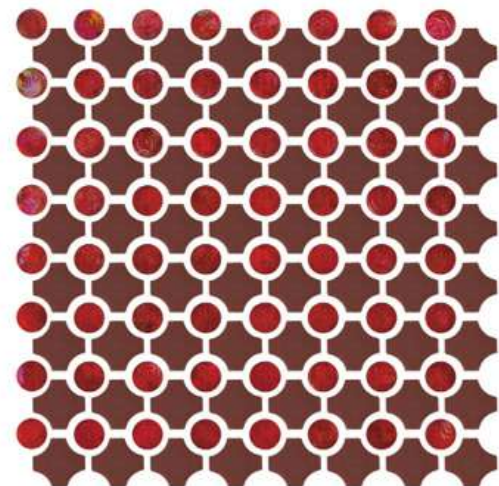
SCE0230



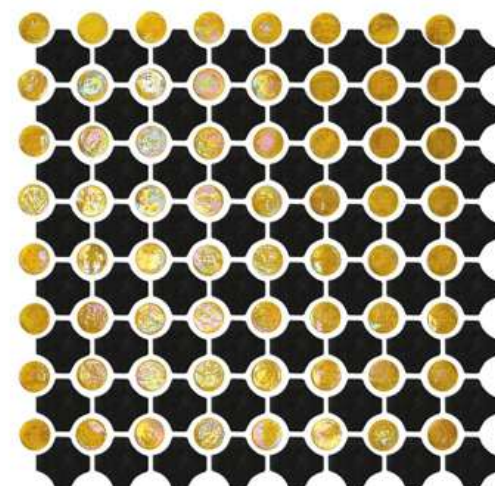
SCE3730



SCE4830



SCE9537

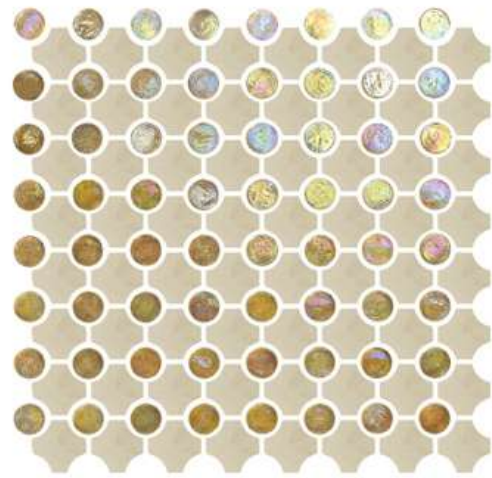


SCE9348

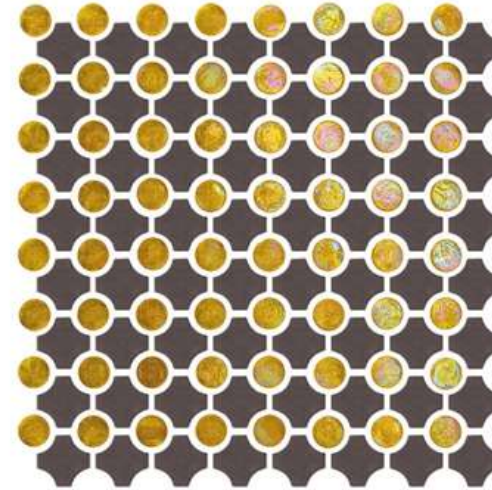


SCE4830

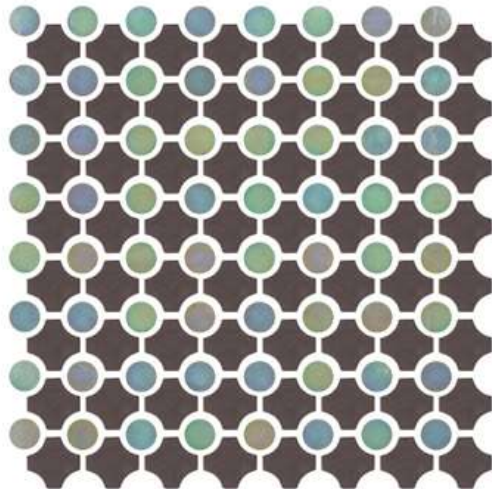
CLASS COMBINATION  
BTOCAD(SCE)



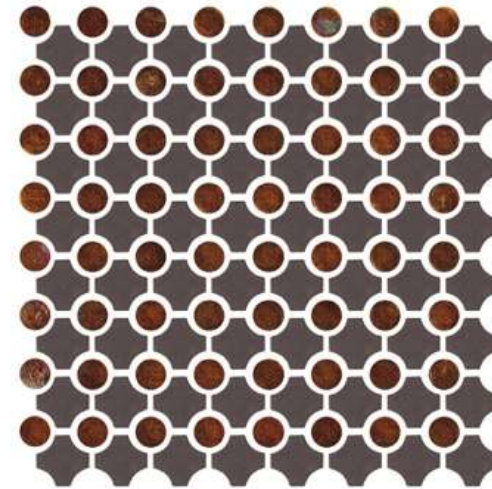
SCE0730



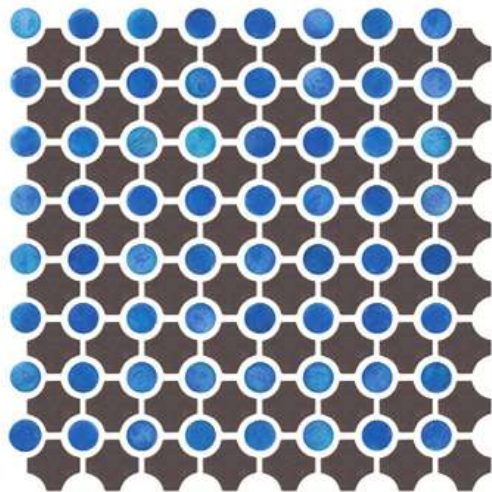
SCE9307



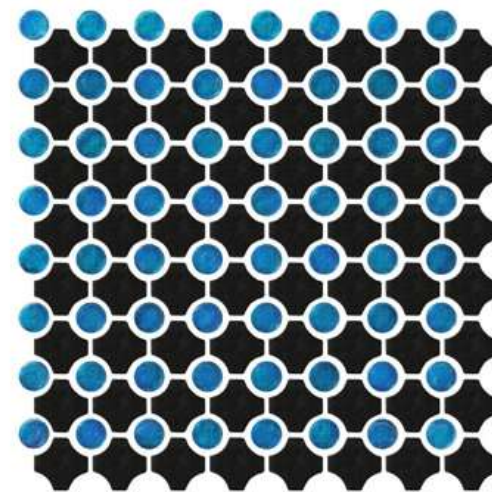
SCE0207



SCE9507



SCE1507



SCE1848



SCE0730

CLASS COMBINATION  
CHECKER(RR)



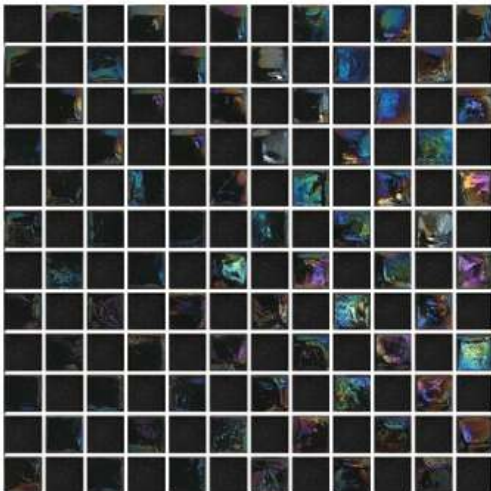
RR4830



RR9537



RR9548



RR4848



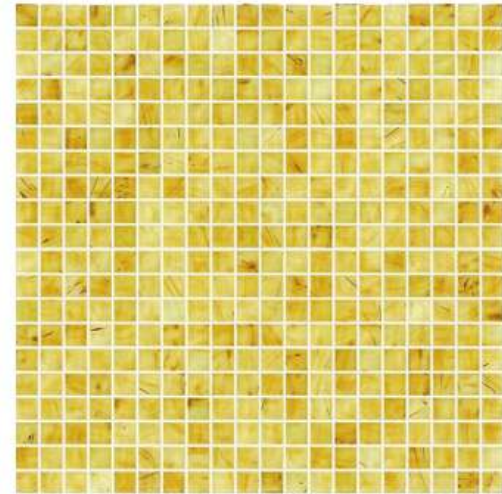
RR9548

**AMBER PART**  
MOSAIC SIZE 15x15MM



WD6122

**WD6122**



AM6134

**AM6134**



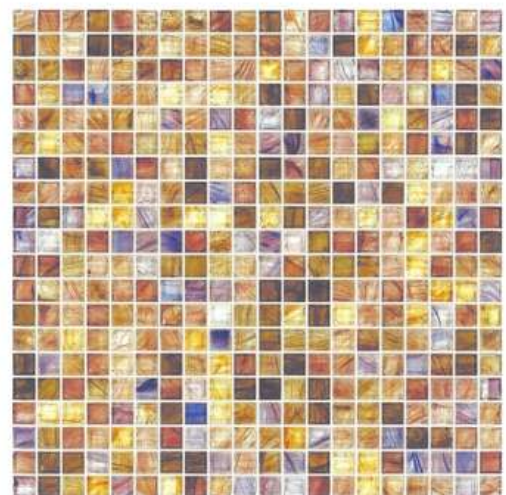
WD6180

**WD6180**



AD6183  
WD6185  
AM6183  
AM6185

**M61404**



AD6143  
AD6137  
AD6134

**M61308**



WD6185

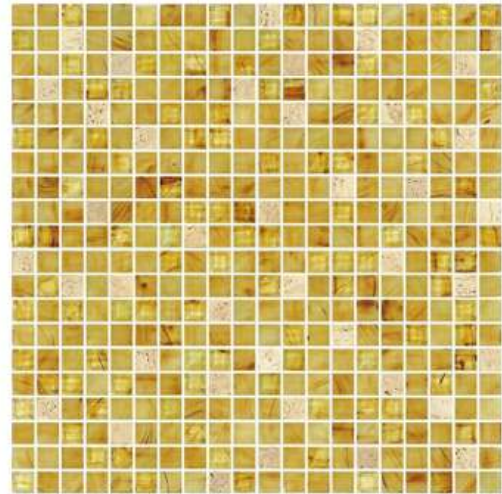
**WD6185**



**AM6134**



**AMBER PART**  
MOSAIC SIZE 15x15MM



S10  
AD6134  
AM6134

**MS306**



WD6180  
S04

**MS207**



S09  
WD6185  
AM6185  
AD6183

**MS405**



AM6143  
AM6137  
AD6137  
S02

**MS401**



**MS207**



*An ISO 9001 : 2008 Certified Company*



**Social Responsibility**  
Our people are our business. We ensure a safe, healthy workplace, give them respect and nurture their talents to take our business forward.



**Economic Responsibility**  
We work hard to ensure our business remains viable and closely with our supply chain to source materials responsibly and sustainably to maintain quality with affordability.



**Environmental Responsibility**  
We focus more on promoting environment friendly products. Gypsum Plaster makes a great eco friendly product.

### CHENNAI

New No.30, Old No.12,  
4th Street,  
Dr.Subbarayan Nagar,  
Kodambakkam, Chennai-600 024.  
T : +91-44-2483 6464 / 2483 6465

### COCHIN

CP IV 449 & 450,  
Companypany,  
Aluva, Eranakulam Dt,  
Kerala-683 106.  
T : +91-484-646 1060

### BANGALORE

No.47, 47/1,  
3rd Floor, 6th Cross,  
Malleswaram,  
Bangalore-560 003.  
T : +91-80-2346 3646

### MUMBAI

T-1, Ramachandra CHS,  
Bhaskar Colony,  
M.G. Road,  
Thane (W.) - 400 602,  
T : +91-22-2540-2060

### HONG KONG

Unit 1003, 10/F, Winning Commercial Building,  
No.46-48, Hillwood Road,  
Tsim Sha Tsui, Kowloon, Hong Kong.  
T : +852-2721 2061 Fax : +852-2721 2062

### CHINA

Suite 8104, 5th Building, Jiuding International City,  
No.3, Jihua 6th Road, Foshan City-  
Guangdong Province, PR China-528000.  
T : +86-757 8209 2480 / +86-134 3316 7980

E : [info@pendamarketing.com](mailto:info@pendamarketing.com) | [www.pendamarketing.com](http://www.pendamarketing.com)